

Update GPF6.0

Ben Hedges
LINX Head of Marketing

April 2011



LINX: Update

Last 12 months at a glance

New look management team

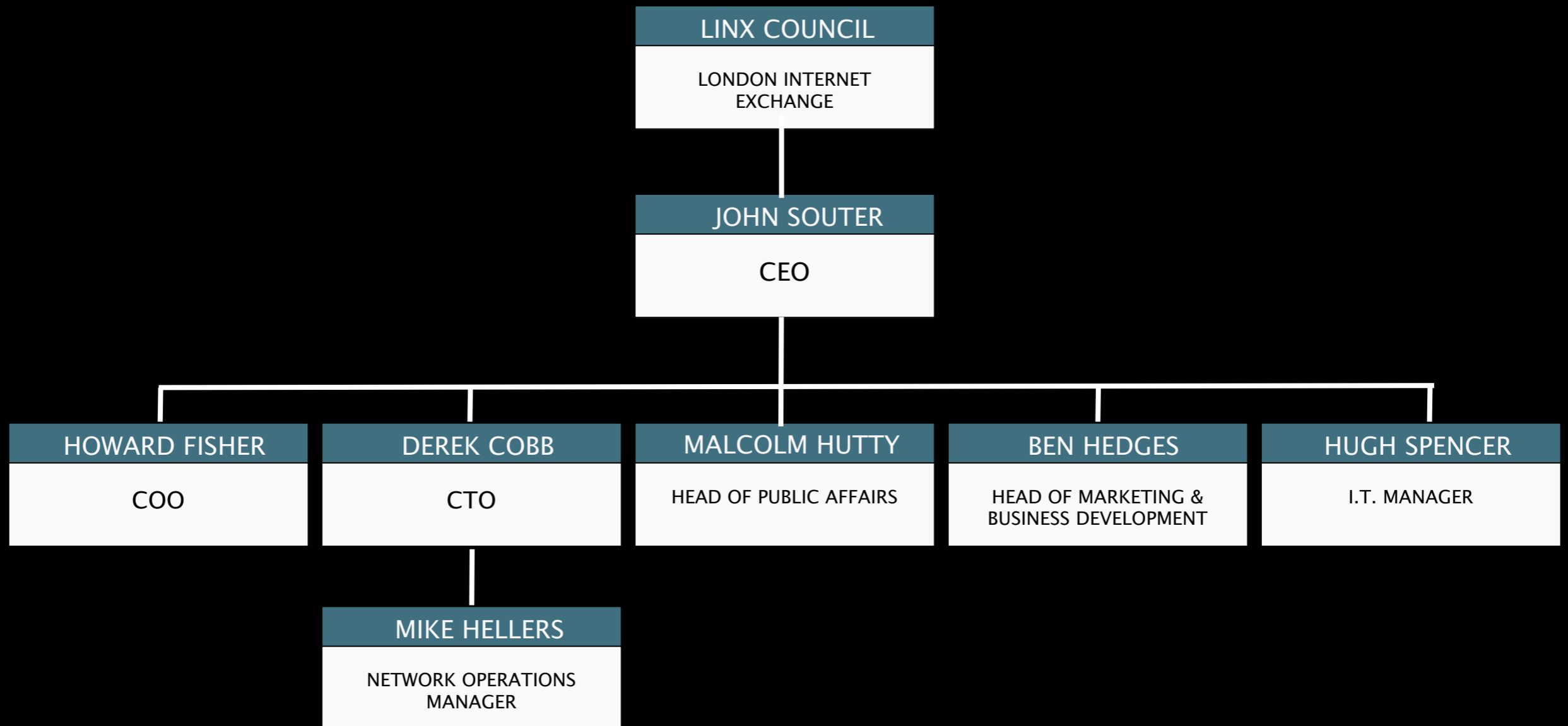
Exchange growth

Results

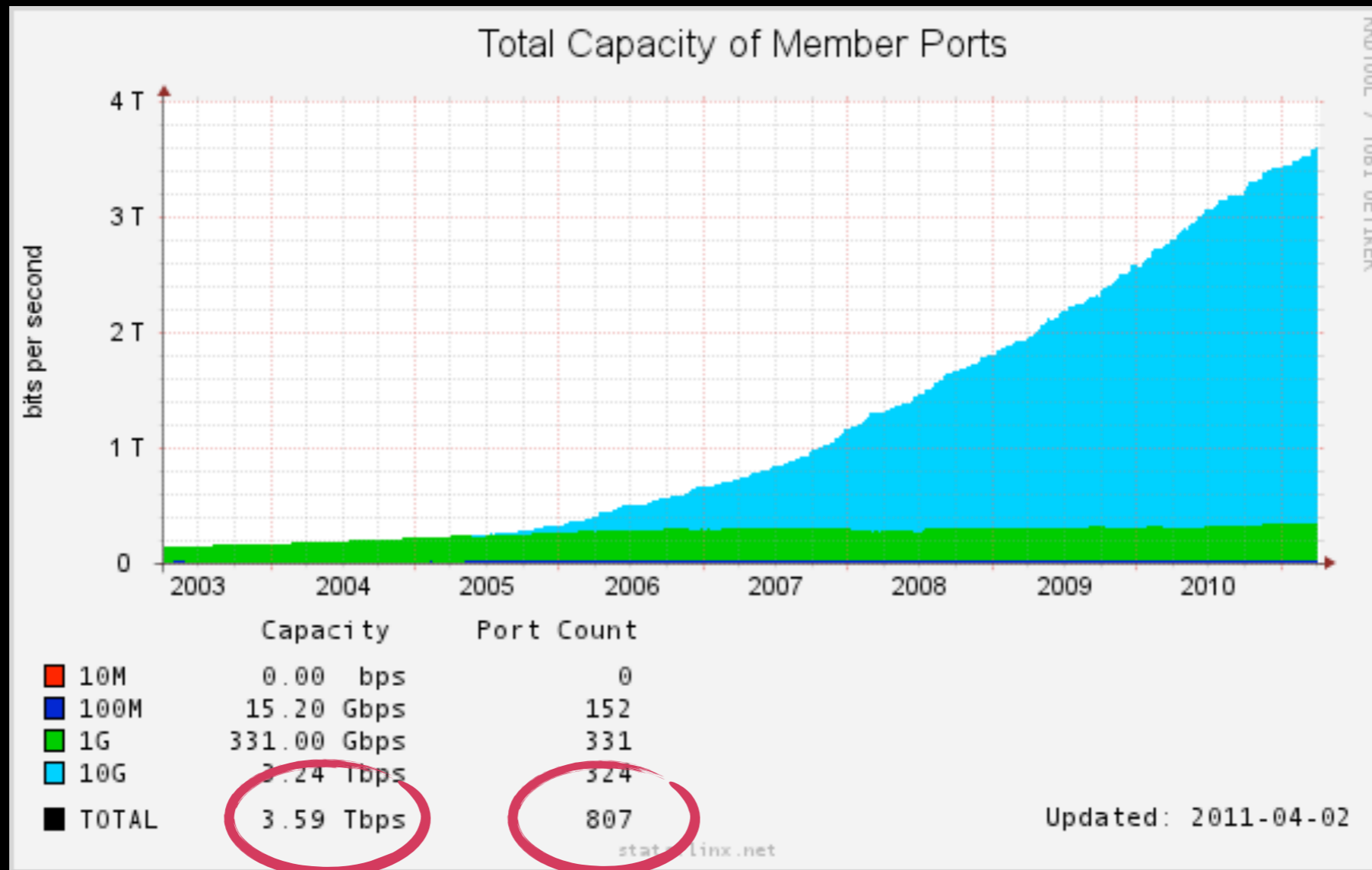
Network developments

Gearing up

New look management team

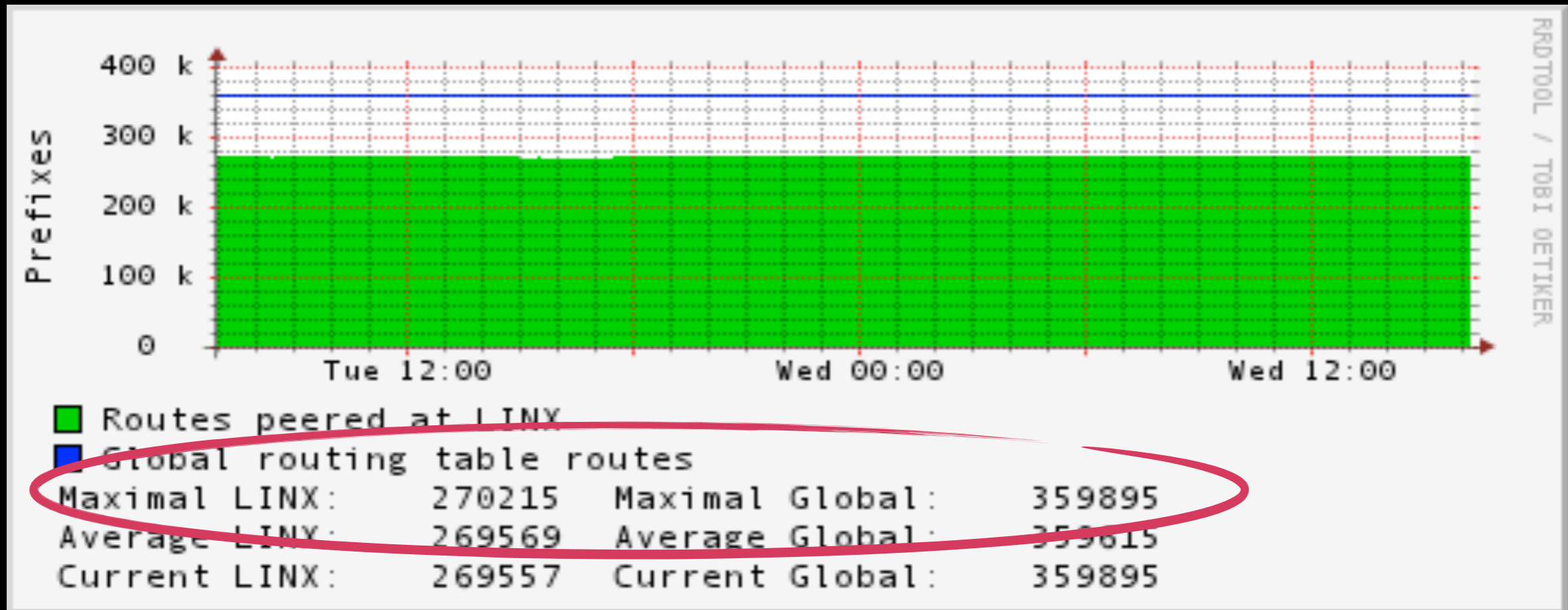


Exchange growth



800+ ports
3.59 Tbps!

Exchange reach



More than 75% of routes on global routing table peered at LINX

Results

58 new member applications

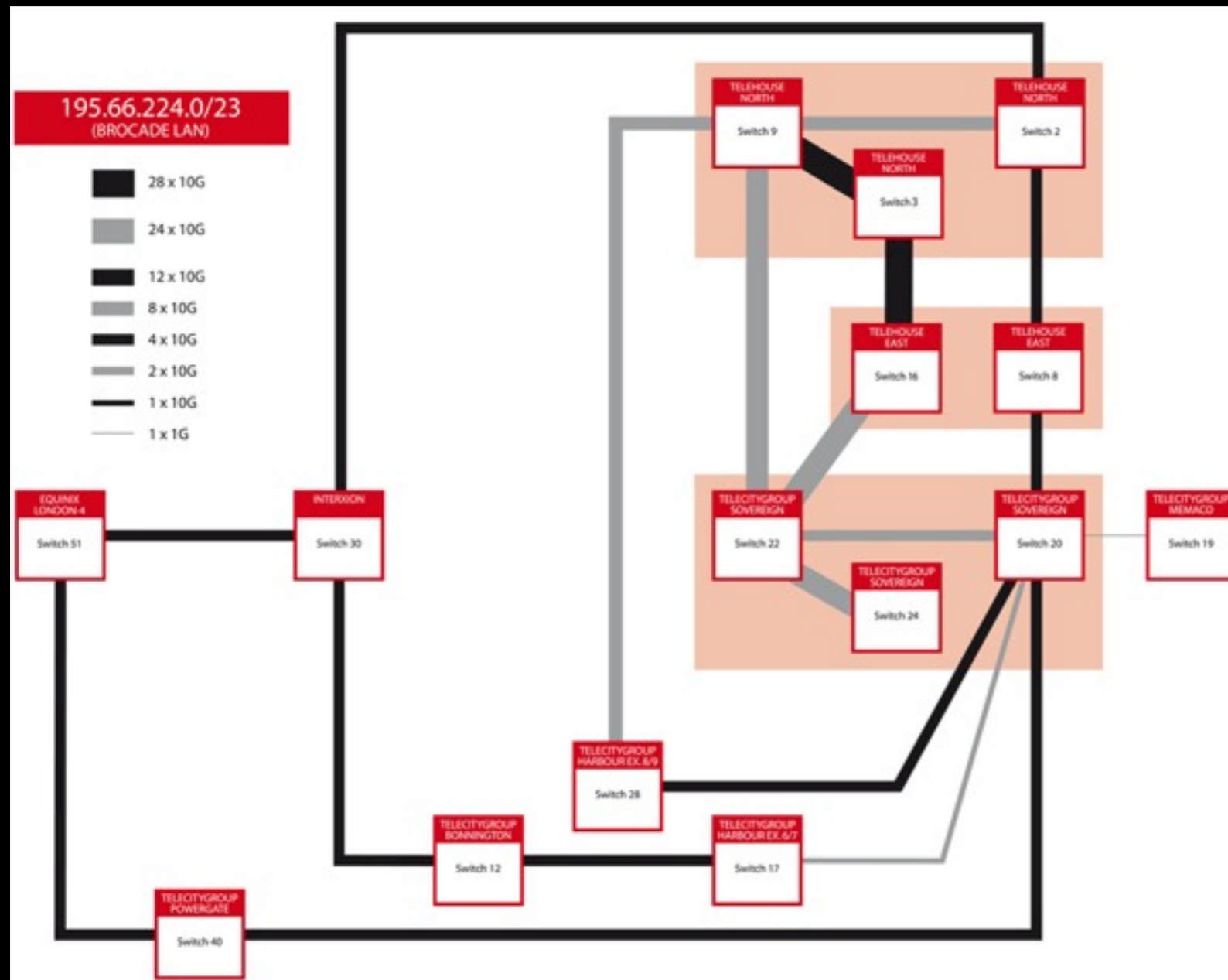
Exchange traffic up 41% excluding PI

14.5% increase in new ports

Financially secure

Network Developments

Brocade LAN



Introduction hSFM

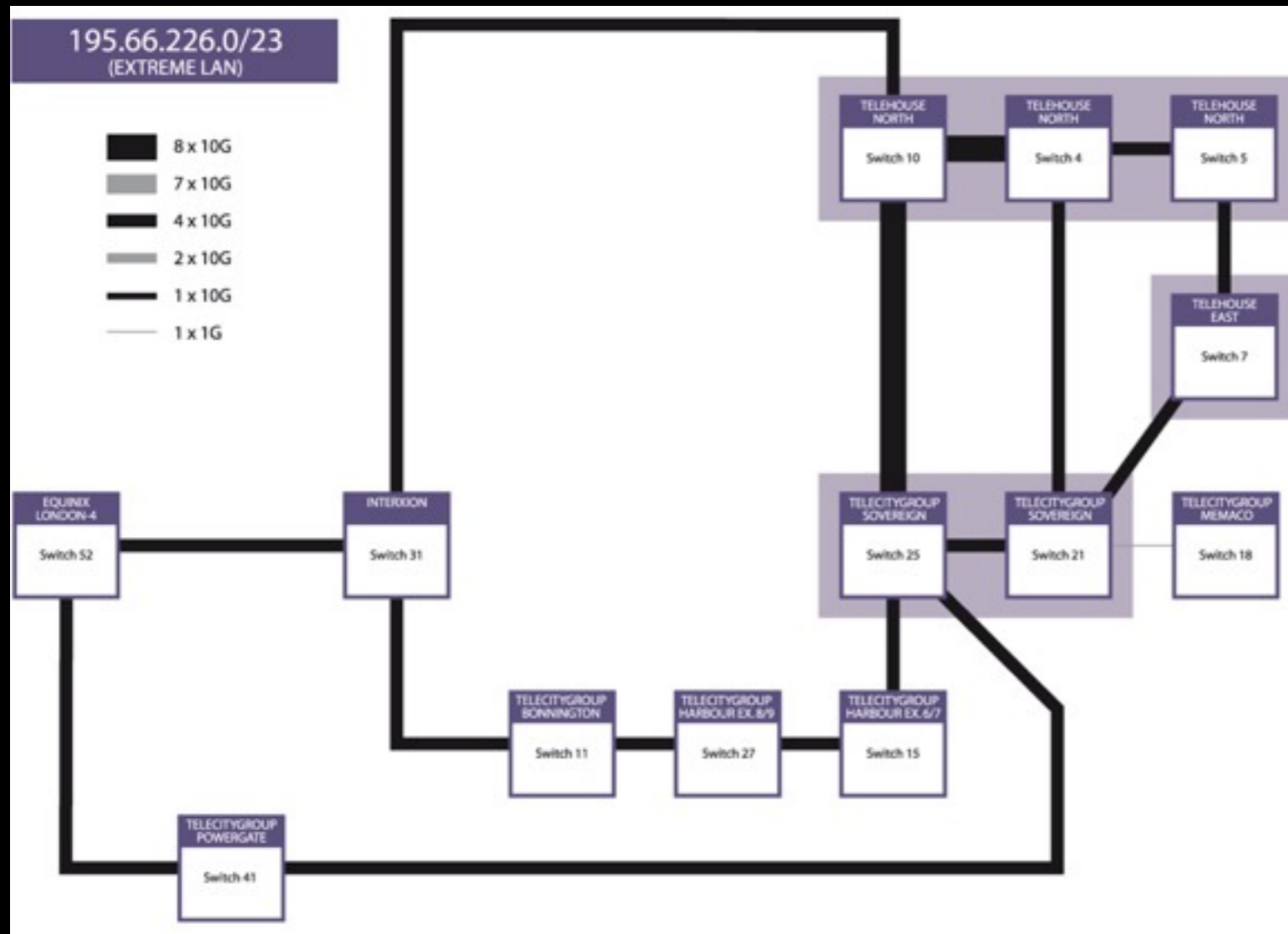
8x10Gbps line cards

Upgraded ISL's to
28x10Gbps

Will be 32x10Gbps in
coming months

Network Developments

Extreme LAN



Two new BlackDiamond 20808 switches with tuneable DWDM optics

More capacity in the core and twice the density for 10GE member-ports

Simpler resiliency model (removed 4 BD8810's and one EAPS ring)

Lower latency on the peering fabric

Service Developments

>20 staff in Engineering & IT

Member Relations team

Public Affairs back to full strength

3 new staff in Business Development

The Future

AGM & Elections at LINX73, May 16th

Huge engineering project to upgrade Brocade LAN

Introduction of VPLS capability will build LINX from Anywhere

Thank You